


Technical characteristics

HOME LIFT	Traction system	<i>With belt</i>
	Rated load	<i>400kg</i>
	Capacity	<i>1 wheelchair with an accompanying or 4 persons</i> 
	Speed	<i>0,15m/s</i>
	Installation	<i>Indoor / Outdoor</i>
	Travel maximum	<i>Up to 15 m</i>
	Number of stops	<i>8 floors maximum</i>
	Finishes	<i>Lacquered steel, RAL range choice without any additional cost</i>
	Device security	<i>Overspeed governor, parachute system, overload detector, overspeed detector, out of race contact, emergency stop, backup battery in case of power cut, backup lighting, bidirectional telephone, HMI (Human Machine Interface)</i>
Standard / Directive	<i>NF EN 81-41 European Directive 2006/42 CE</i>	

CABIN	Dimensions (W x H)	<i>0,80 x 1,25m / 0,90 x 1,25m / 1,00 x 1,25m / 1,10 x 1,25m</i>
	Service	<i>Same face / Opposite</i>
	Walls	<i>All type of finishes available</i>
	Button	<i>With registration</i>
	Ceiling light	<i>Brushed aluminum integrating 2 LED spots lights</i>
	Security	<i>Light curtain on access side</i>

DOOR	Door opening / closing	<i>Automatic swing door</i>
	Engine	<i>Integrated with the fixed frame (invisible, anti-intrusion)</i>
	Type	<i>Fully glazed panoramic</i>
	Windows	<i>Stadip 44/5 - Transparent / Opal glass / Brown</i>
	Passage dimensions	<i>0,73 x 2,00 / 0,83 x 2,00m / 0,93 x 2,00m</i>
	Command controls	<i>With registration one touch controls, integrated to the fixed frame</i>
	Security	<i>Infrared cell barriers</i>

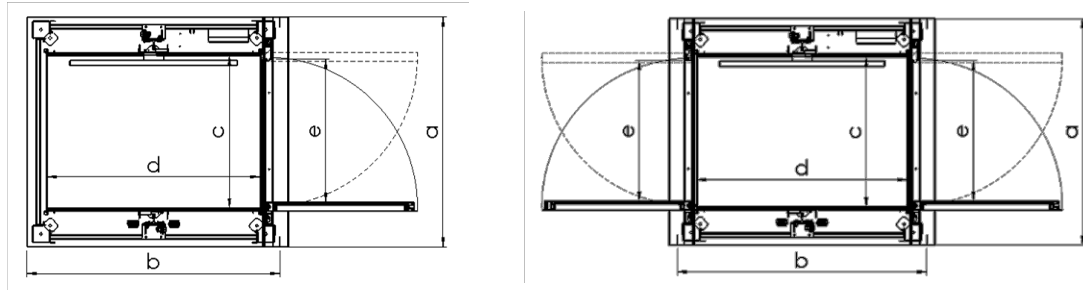
ELECTRICITY	Engine	<i>All electric, integrated to the lift</i>
	Electric box	<i>Integrated to the sheath (without engine room)</i>
	Voltage	<i>Single-phase electric power 230V P+N+T (3,2,5mm²)</i>
	Power	<i>1,5kw</i>
	Cable	<i>Multi-conductor TBT, cable outlet : 2,50m, 5 pairs 9/10th</i>
	Protection	<i>20A / 30mA, circuit breaker C curve</i>

WORK OUT BATCH

Shell of a building	<i>Masonry sheath, pit, floor, paint finish</i>
Electricity	<i>On hold electric inlet linked to TBT, scrabbard included</i>



Technical characteristics



	<i>a x b</i>	<i>c x d</i>	<i>e</i>		
Service	Pylon dimensions	Cabin dimensions	Door passage	Pit depth	Headroom
Same face Opposite	1,30 x 1,50	0,80 x 1,25	0,73 x 2,00	0,08	2,60 or 2,75 if waterproof roof
Same face Opposite	1,40 x 1,50	0,90 x 1,25	0,83 x 2,00		
Same face Opposite	1,50 x 1,50	1,00 x 1,25	0,93 x 2,00		
Same face Opposite	1,60 x 1,50	1,10 x 1,25	0,93 x 2,00		
Opposite					

Unit: meters

OUT BATCH

SHEATH

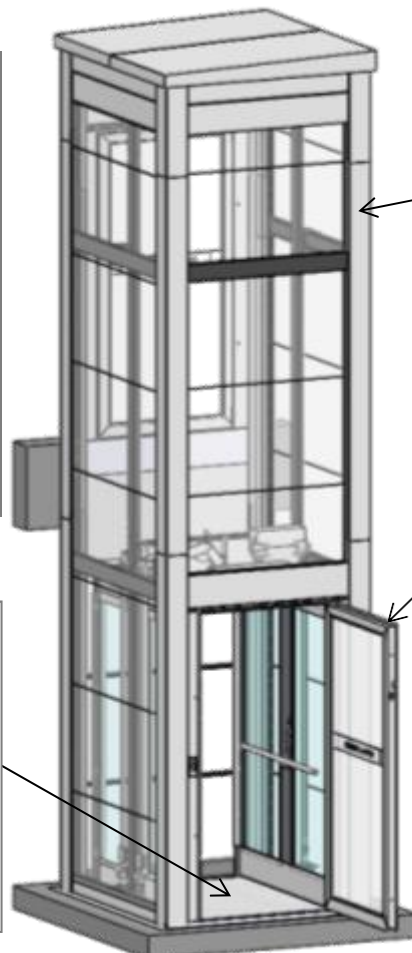
- NO LOADBEARING WALL REQUIRED
- Masonry sheath, plasterboard, wood frame, metal frame,...
- Fixation at the pit bottom
- Fixation at each floor
- 8cm pit
- Headroom: 2,60m min.
- No ventilation

ELECTRICITY

- Electric inlet simple phase 230V at the pit bottom

CABIN

- NOT SERVED WALL SHAFT COATED TO GIVE A SMOOTH WALL
- Operating console, baseboards and handrail in brushed stainless
- 2 spots LED lighting
- Nonslip flooring following the large Ermhes range
- Infrared cells barriers



PYLON

- RAL RANGE CHOICE
- Supporting structure
 - Cabin guide rail
- Wall covering following choice
 - Transparent glass and/or lacquered steel
- Finishes (square, plinth)
- Ceiling light or waterproof roof

DOOR

- CHOOSE FROM A RAL RANGE
- Swing door
- Automatic opening / closing (or manual)
- Fully glazed panoramic stapid 44/2
- One touch controls command (with registration)

