


## Technical characteristics

<b>DEVICE</b>	<b>Mechanism</b>	<i>With belt</i>
	<b>Payload</b>	<i>400kg</i>
	<b>Charge capacity</b>	<i>1 wheelchair person and 1 accompanying or 4 persons</i> 
	<b>Vitesse</b>	<i>0,15m/s</i>
	<b>Installation</b>	<i>Indoor / Outdoor</i>
	<b>Race</b>	<i>Up to 15 m max.</i>
	<b>Number of stops</b>	<i>8 floors max.</i>
	<b>Finishings</b>	<i>Lacquered steel, RAL range - contact us for other finishings touches</i>
	<b>Device security</b>	<i>Parachute system, overload detector, overspeed detector, out of race contact, emergency stop, back up battery in case of power cut, backup lighting, bidirectional telephone, HMI (Human Machine Interface)</i>
<b>Norme / Directive</b>	<i>NF EN 81-41 European Directive 2006/42 CE</i>	

<b>BASKET</b>	<b>Indoor dimensions</b>	<i>0,90 x 1,40m / 1,00 x 1,40m / 1,10 x 1,40m</i>
	<b>Service</b>	<i>Same face / Opposite</i>
	<b>Indoor covering</b>	<i>Consult finishings</i>
	<b>On/Off switch</b>	<i>With registration</i>
	<b>Ceiling light</b>	<i>Brushed aluminum integrating 2 LED spots lights</i>
	<b>Security</b>	<i>Light curtain on access side</i>

<b>DOOR</b>	<b>Door</b>	<i>Swing door with automatic opening and closing</i>
	<b>Motorisation</b>	<i>Integrated with the fixed frame (invisible, anti-intrusion)</i>
	<b>Type</b>	<i>Fully glazed panoramic</i>
	<b>Windows</b>	<i>Stadip 44/2 - Transparent / Opal glass / Brown</i>
	<b>Passage dimensions</b>	<i>0,83 x 2,00m / 0,93 x 2,00m</i>
	<b>On/Off switch</b>	<i>With registration, integrated to the fixed frame</i>
	<b>Security</b>	<i>Anti-pinching</i>

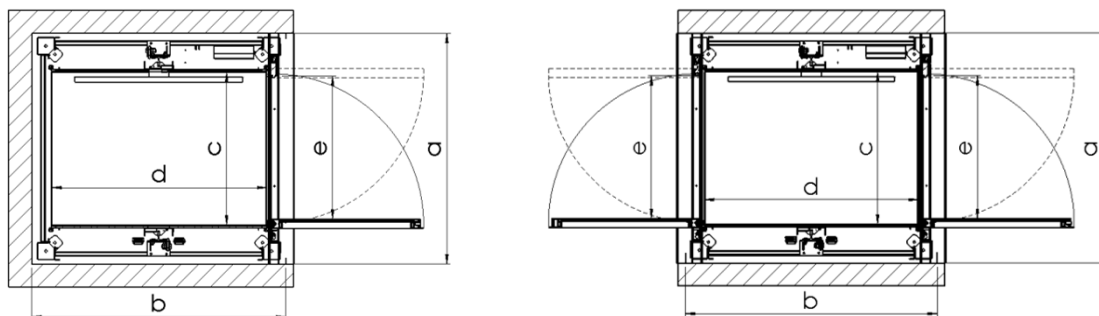
<b>ELECTRICITY</b>	<b>Motorisation</b>	<i>All electric, integrated to the lift</i>
	<b>Electric box</b>	<i>Integrated to the sheath (without engine room)</i>
	<b>Voltage</b>	<i>Single-phase electric power 230V P+N+T (3,2,5mm<sup>2</sup>)</i>
	<b>Power</b>	<i>1,5kw</i>
	<b>Cable</b>	<i>Multi-conductor TBT, cable outlet : 2,50m, 5 paires 9/10ème</i>
	<b>Protection</b>	<i>20A / 30mA, circuit breaker C curve</i>

<b>WORK OUT BATCH</b>	
<b>Shell of a building</b>	<i>Masonry sheath, pit, floor, paint finish</i>
<b>Electricity</b>	<i>On hold electric inlet linked to TBT, scrabbard included</i>



*Datas are provided for information only, ERMHES reserves the right to modify them without advance notice*

## Technical characteristics



Service	$a \times b$ Sheath dimensions	$c \times d$ Cabin dimensions	$e$ Door passage	Pit depth	High Reserve
Same face Opposite	1,40 x 1,65	0,90 x 1,40	0,83 x 2,00	0,08	2,60
Same face Opposite	1,50 x 1,65	1,00 x 1,40	0,93 x 2,00		
Same face Opposite	1,60 x 1,65	1,10 x 1,40	0,93 x 2,00		

Unit : meters

### SUPPORTING STRUCTURE

- Allows to abstain from a supporting wall or a hook
- Access faces covering for smooth sides (melaminé or sheet metal)
- Guide rail of the cabine
- RAL 9005

### OUT BATCH

#### SHEATH

- Masonry sheath, plaster, wood frame, metal frame,...
- No supporting wall
- Fixations :
  - Fixation at the pit bottom
  - Fixation at each floor
- 8cm pit
- High reserve : 2,60m min.
- No ventilation

#### ELECTRICITY

- Electric inlet monophased 230V at the pit bottom



### DOOR

- Swing door
- Automatic opening and closing
- Fully glazed panoramic stapid 44/2
- On/Off switch with integrated registration
- No subject to derogation until 3,20 of race
- Draughtproofing
- Choose from the range RAL

### CABINE

- Unserviced covering wall depending on ERMHES range
- Operating console, baseboards and handrail in brushed stainless
- 2 spots LED lighting
- Nonskid flooring following the Ermhes range
- Light curtain on access walls

